

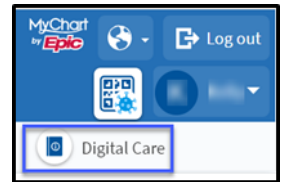
Thank you for choosing Duke Health for your healthcare needs. Your provider ordered an abdominal paracentesis for you. Call Duke GI at (919) 684-6437 if you have questions about this test, preparation, or appointment.

## What is a paracentesis?

A paracentesis is an outpatient procedure that drains fluid from your abdomen through a hollow catheter. A Gastroenterology (GI) provider performs this procedure. You will get an IV inserted for this procedure. You may receive albumin through the IV for this procedure. This procedure does not require IV sedation or anesthesia. You do not need a driver for this procedure. Plan to rest at home after your procedure.

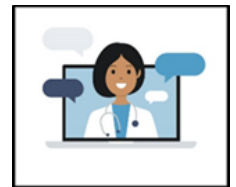
## Planning for Your Paracentesis - Two (2) weeks before your procedure

- Log into My Duke Health to review your procedure information.
- Read your procedure instructions.
- Print the instructions and place them in a safe place, like on your refrigerator.
- You will not receive sedation (anesthesia) for this procedure. You can drive yourself to and from the procedure.
- Review your procedure location (address), date, and arrival time.
- Plan to be in the GI department for three (3) hours for your procedure. This time includes check-in, the procedure, and recovery.



## TWO (2) WEEKS Before Your Procedure

- If you take medicine that thins your blood, ask your provider if you need to hold your medicine. (Examples Coumadin, Pradaxa, Eliquis, Xarelto, Plavix, Effient, or Brilinta).



## The Day Before Your Procedure

- Review the specific instructions from your GI provider about your procedure.
- Follow your provider's instructions about your medicines.
- Eat your usual diet.

## The Day of Your Procedure

- Arrive one hour before your procedure.
- Review specific instructions from your GI provider about your procedure.
- Follow your provider's instructions about your medicines.
- Eat your usual diet. There are no food restrictions for this procedure.

## Duke Clinic 2J Information: Address 40 Medicine Circle, Durham, NC.

This clinic is located on the second floor of the Duke Hospital outpatient clinic building. Valet parking is available for a fee in front of the Duke Clinics - Monday through Friday from 5:00 a.m. until 10:00 p.m. Parking is also available in the clinic parking garage. The parking garage is across the street from the clinic entrance on Trent Drive. There is an hourly parking fee.

## Hotel Resource:

A list of nearby hotels is available on the Duke Health website: <https://www.dukemedicine.org/>